

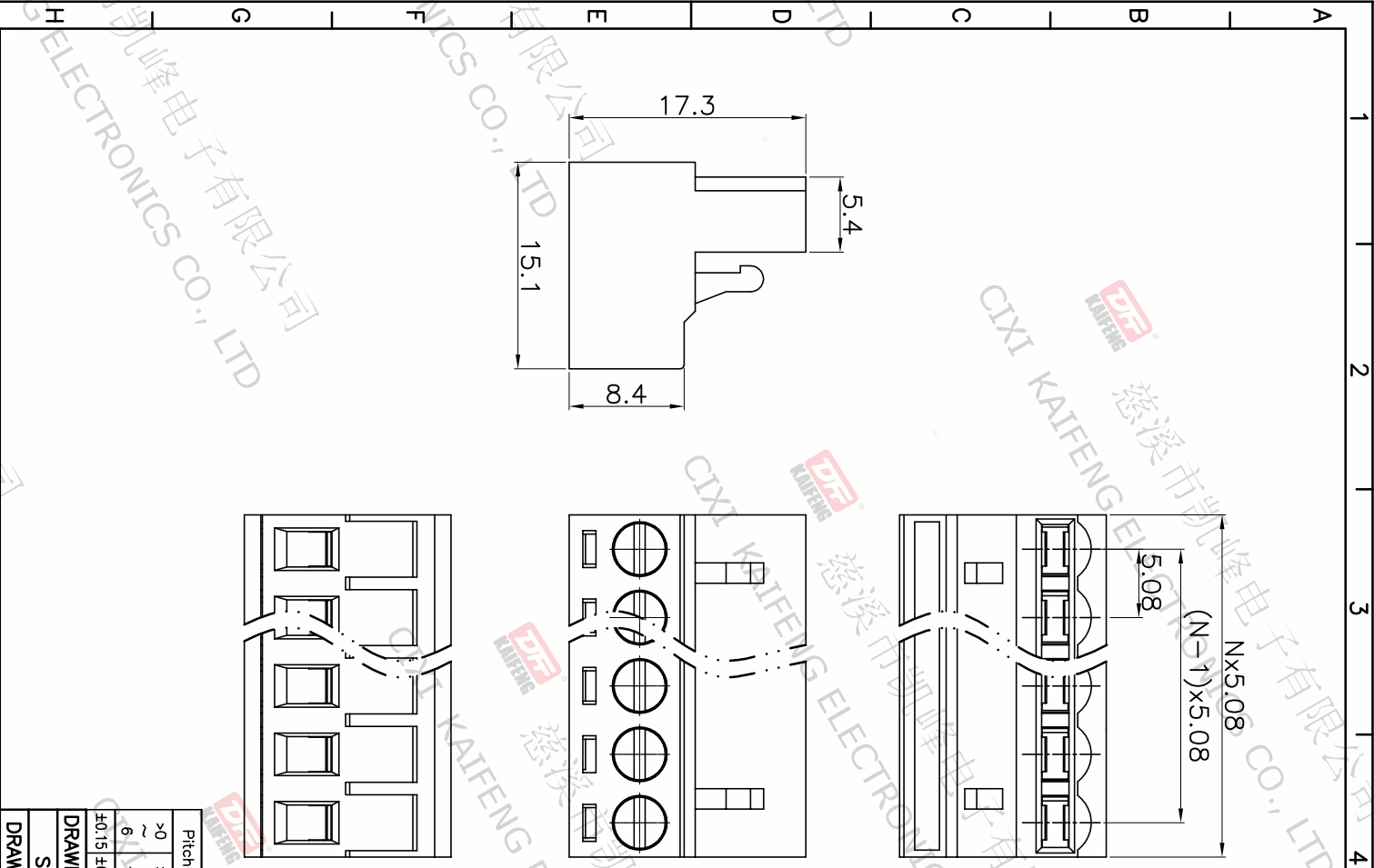
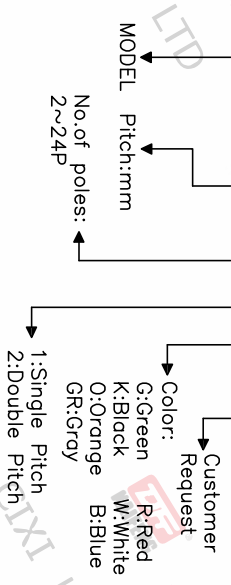
REV.	DESCRIPTION	DATE	DRAFTER	APPROVER
A1	DWG.REL	2020.5.30	ZHANG	JIN

- Material
  - ①Screw : M2.5 steel, Zinc plated, \*- slot type
  - ②Housing : PA66, UL94V-0
  - ③Contact : Copper alloy, Tin plated
  - ④Clamp : Brass, Ni plated
  - ⑤Cover : PA66, UL94V-0
- Electrical
  - UL IEC
  - Rated voltage : 300V 320V
  - Rated current : 15A 20A
  - Contact resistance : 20mΩ(Max)
  - Insulation resistance: 500MΩ/DC500V
  - Withstanding Voltage : AC2000V/1min
  - Wire range: 24-14AWG 2.5mm<sup>2</sup>

- Mechanical
  - Operating temperature: -40°C ~ +105°C
  - Soldering temperature: 250°C ±5/5sec
  - Torque: 0.4N.m (3.54Lb.in)
  - Strip length: 7-8mm
- RoHS compliance

HOW TO ORDER

KF2EDGP-5.08-XXP-1 X-XXXXX



Pitch range	Nominal dimension range	0.1/10
>0	>0	0.1/10
~6	~30	0.1/10
~10	~60	0.1/10
~24	~100	0.1/10
~30	~150	0.1/10
±0.15	±0.30	±2°
±0.20	±0.30	±2°
±0.30	±0.50	±2°
±0.70	±1.00	±2°
±1.30	±1.30	±2°

DRAWING TYPE	CUSTOMER DRAWING
SCALE	1:1
SHEET	1 OF 1
DRAWING NO.	W10000572
PROJECTION	TITLE
UNIT	KF2EDGP-5.08-XXP-1X
SHEET SIZE	A4
SERIES	KF2EDGP

**DF** 慈溪市凯峰电子有限公司  
CIXI KAIFENG ELECTRONICS CO.,LTD